

Note:

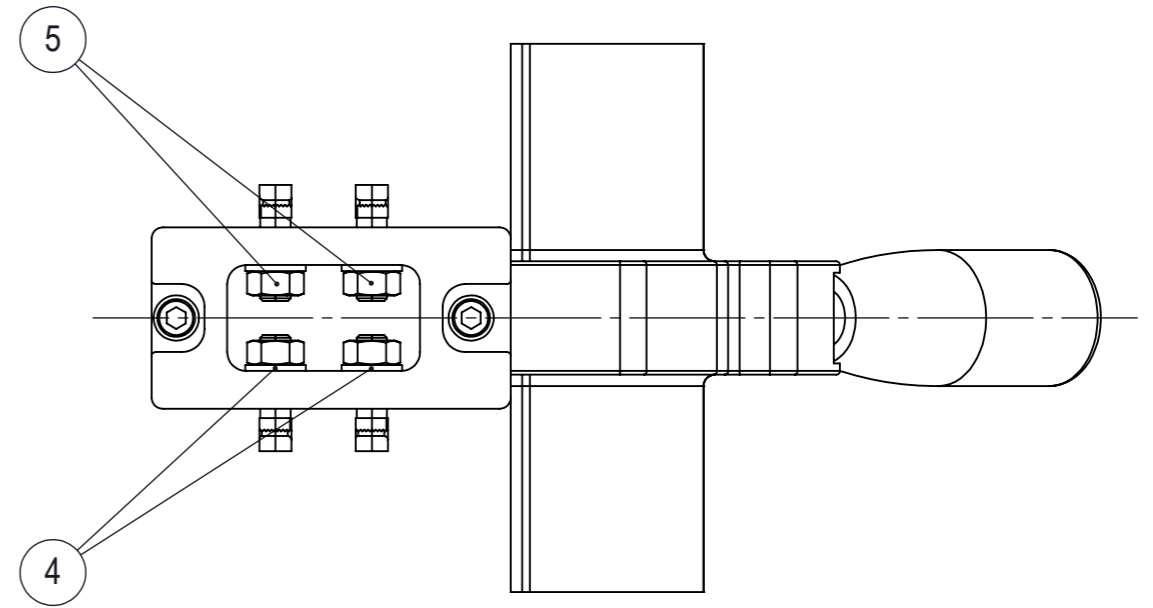
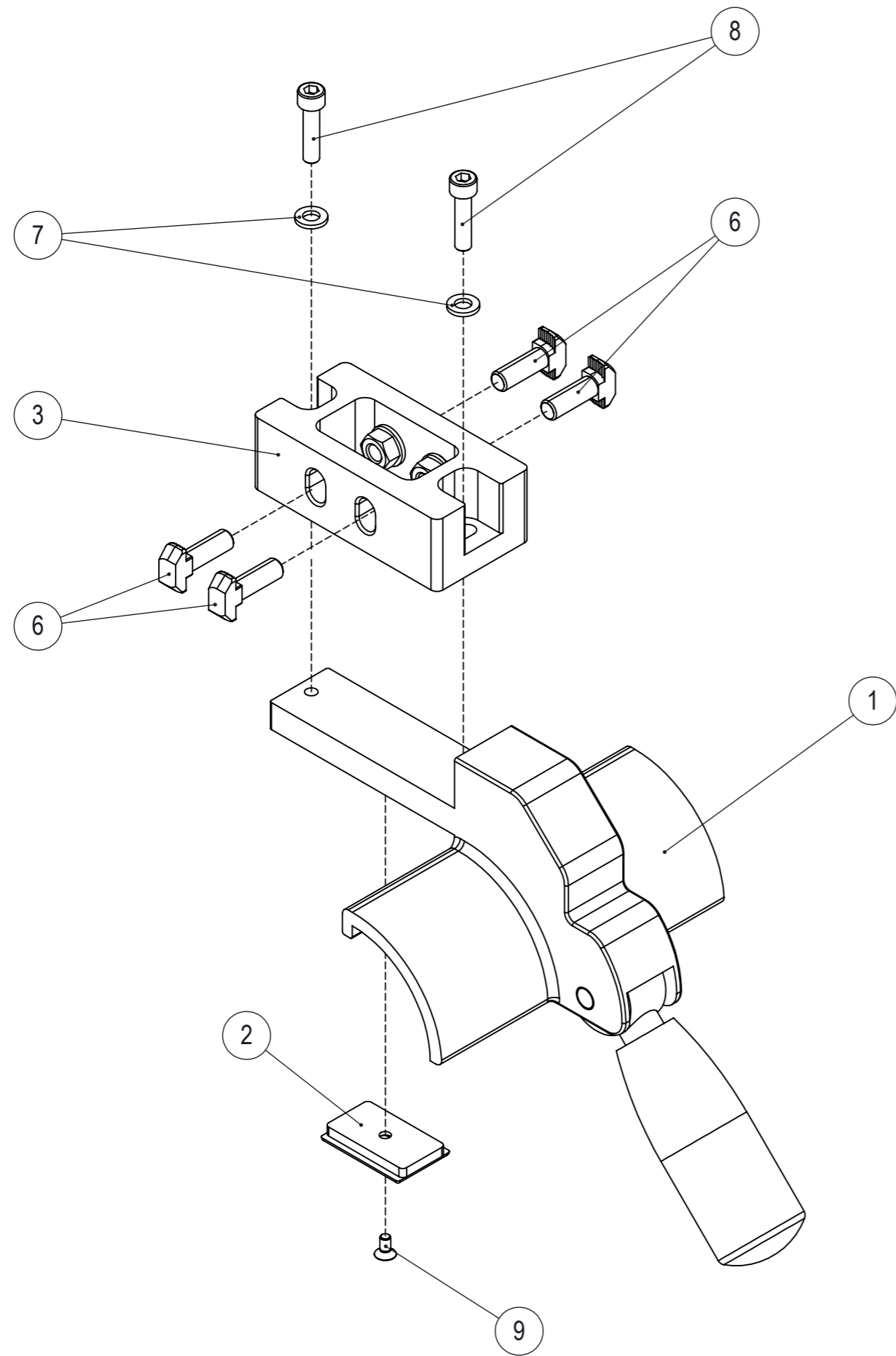
Find all the "VKM" parts attached on the website They are ready to be printed at your own 3D printer service. Fasteners (bolts, washers and nuts) are ISO standardised and can easily be found at any hardware store. Aluminium profiles are also common. You should be able to find a supplier who can cut and ship the specified profiles on the web. Visit <https://florians-workshop.com/projects/makita-mlt100n-rip-fence> to learn more.

22	1	/	Screw, countersunk head, M4x8	Part
21	1	/	Hexagonal nut, DIN 9334, M6	Part
20	2	/	Screw, countersunk head M8x20	Part
19	1	/	ALU Profile 30x30x140	Part
18	1	/	Washer, DIN 9021, 6.4	Part
17	1	/	Hammer head screw, U8/M6x60	Part
16	1	/	ALU Profile 30x30x600	Part
15	2	/	Screw, cylindrical head, DIN 912, M6x25	Part
14	2	/	Washer, DIN 125, 6.4	Part
13	4	/	Screw, cylindrical head, DIN 912, M8x25	Part
12	12	/	Hammer head screw, U10/M8x25	Part
11	12	/	Hexagonal nut, DIN 934, M8	Part
10	16	/	Washer, DIN 125, 8.4	Part
9	2	/	ALU Profil 45x60, 610 mm	Part
8	1	/	ABS Slider (Original Makita Part)	Part
7	1	/	Handle (Original Makita Part)	Part
6	2	VMK-01.0123.03.06	Cap 30x30x8	Part
5	2	VKM-01.0123.03.05	Cap 60x45x15	Part
4	1	VMK-01.0123.03.04	Handle ø75x33	Part
3	1	VKM-01.0123.03.03	Connecting part 138x135x60	Part
2	1	VMK-01.0123.03.02	Connecting part 95x48x32	Part
1	1	VMK-01.0123.03.01	Connecting part 95x48x32	Part

Poz.	Kol.	Šifra	Naziv	ME
		Projekt:	Makita MLT100N Guide	
		Merilo:	1 : 5	
		Izdelač:	Remšak F.	
		Datum:	8.1.2023	
		Stran:	1 / 5	




SUB-ASSEMBLY 1



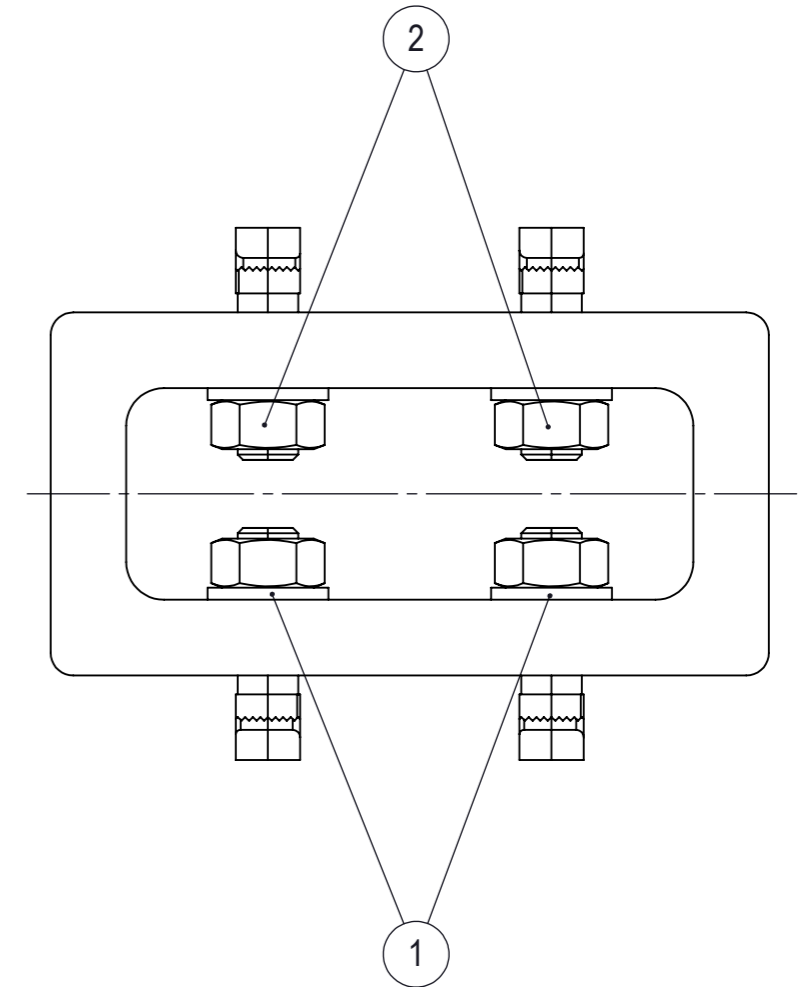
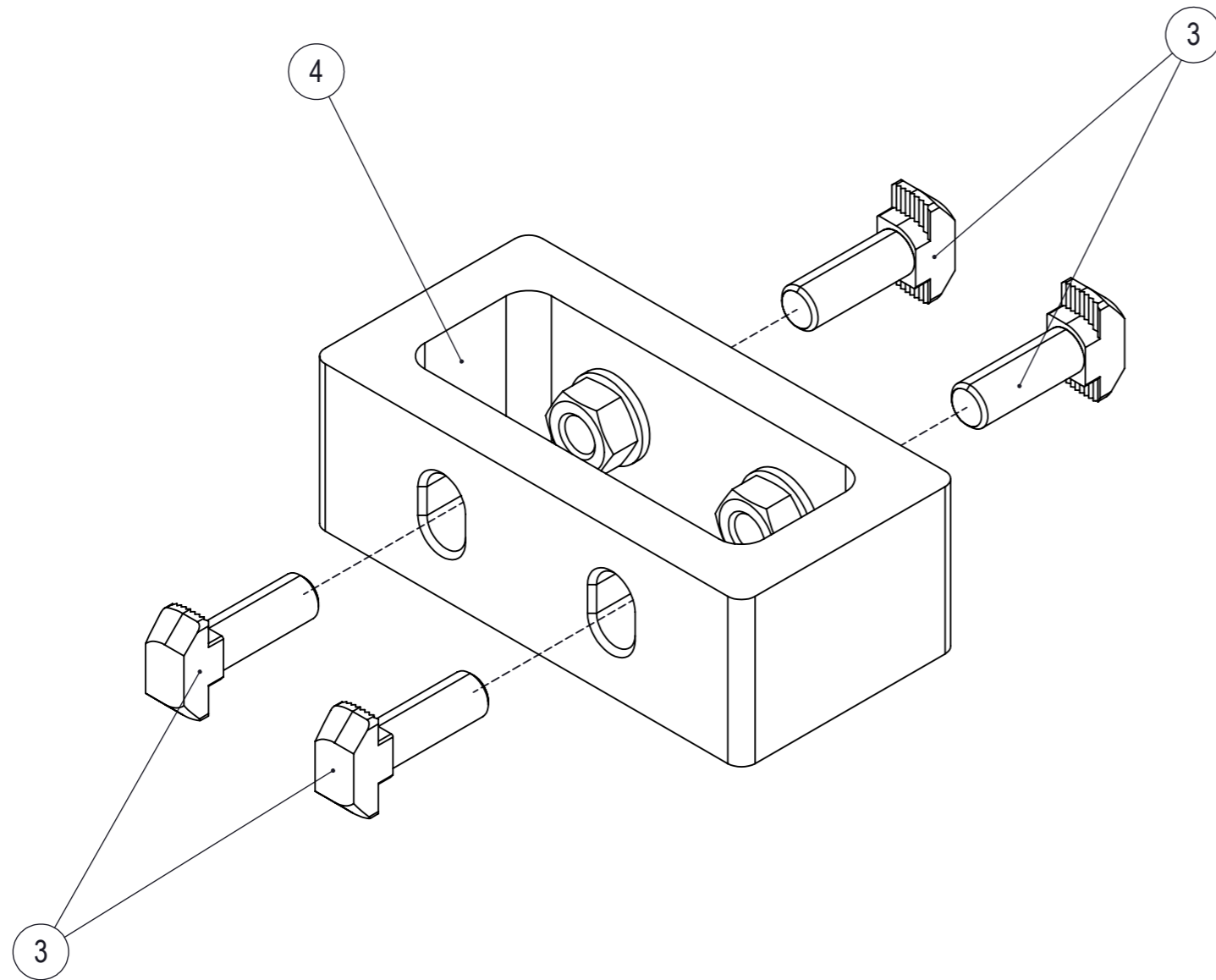
Tip:

Keep the hammer head screws (Position 6) loose, you will later need to slide their heads into the slot on the aluminium profile.

9	1	/	Screw, countersunk head, M4x8	Part
8	2	/	Screw, cylindrical head, DIN 912, M6x25	Part
7	2	/	Washer, DIN 125, 6.4	Part
6	4	/	Hammer head screw, U10/M8x25	Part
5	4	/	Hexagonal nut, DIN 934, M8	Part
4	4	/	Washer, DIN 125, 8.4	Part
3	1	VMK-01.0123.03.01	Connecting part 95x48x32	Part
2	1	/	ABS Slider (Original Makita Part)	Part
1	1	/	Handle (Original Makita Part)	Part

Poz.	Kol.	Šifra	Naziv	ME
				
		Projekt:	Makita MLT100N Guide	
		Merilo:	1 : 2	
		Izdelač:	Remšak F.	
		Datum:	8.1.2023	
		Stran:	2 / 5	


SUB-ASSEMBLY 2



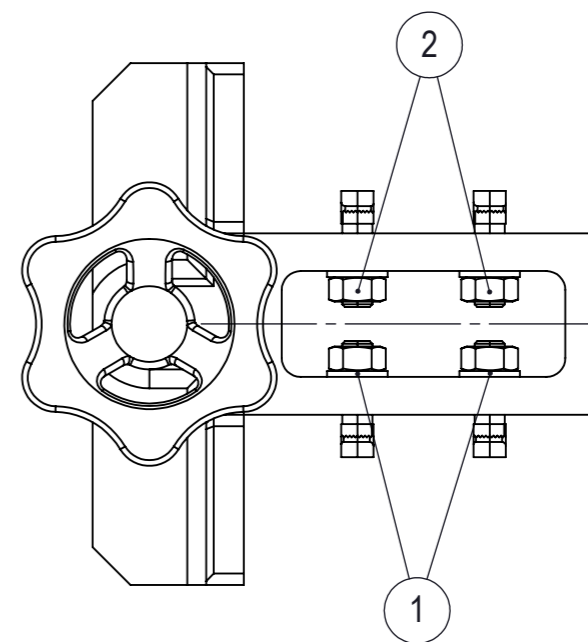
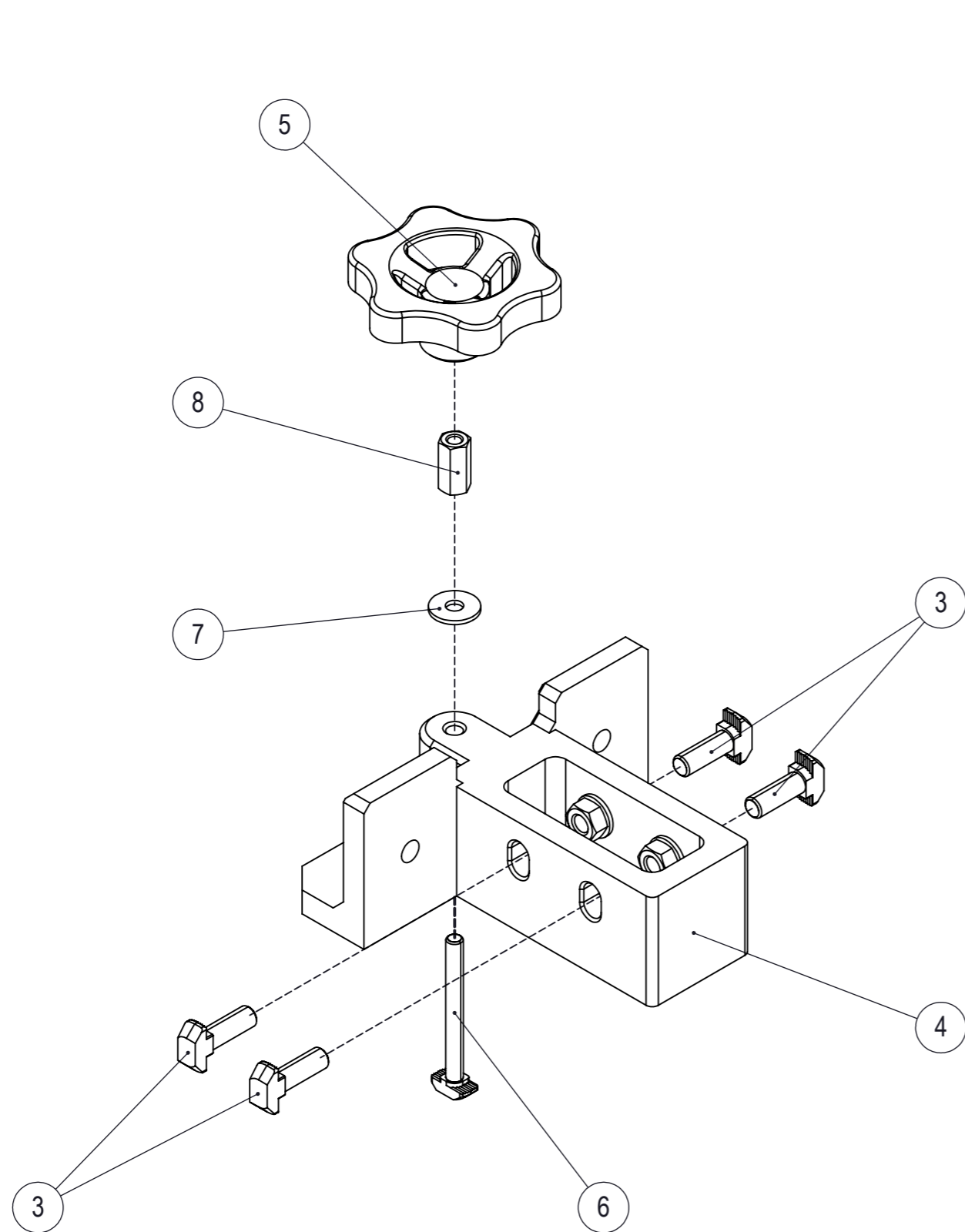
Tip:

Keep the hammer head screws (Position 3) loose, you will later need to slide their heads into the slot on the aluminium profile.

4	1	VMK-01.0123.03.02	Connecting part 95x48x32	Part
3	4	/	Hammer head screw, U10/M8x25	Part
2	4	/	Hexagonal nut, DIN 934, M8	Part
1	4	/	Washer, DIN 125, 8.4	Part
Poz.	Kol.	Šifra	Naziv	ME

	Projekt:	Makita MLT100N Guide
	Merilo:	1 : 1, (1:2)
	Izdelač:	Remšak F.
	Datum:	8.1.2023
	Stran:	3/5


SUB-ASSEMBLY 3

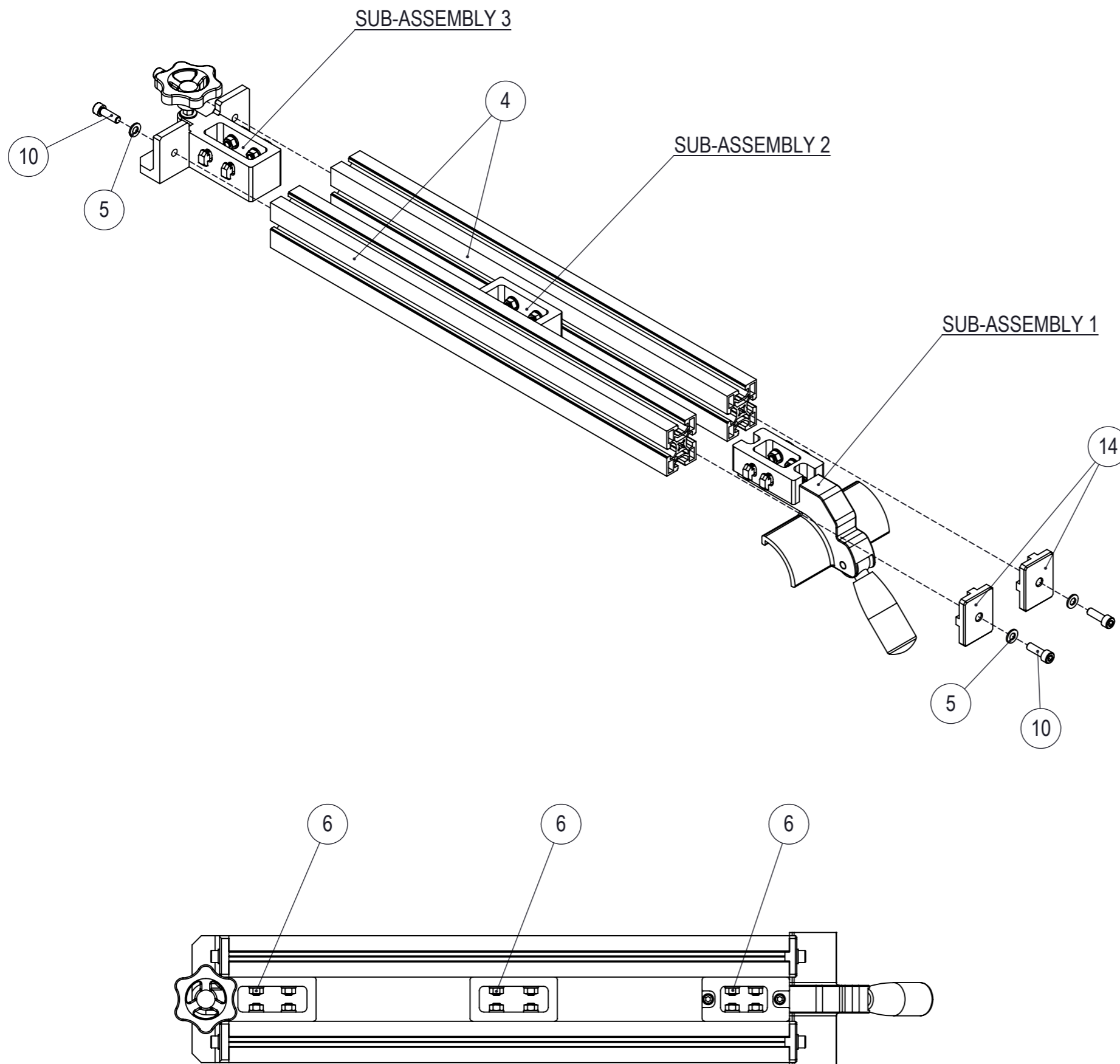


Tip:

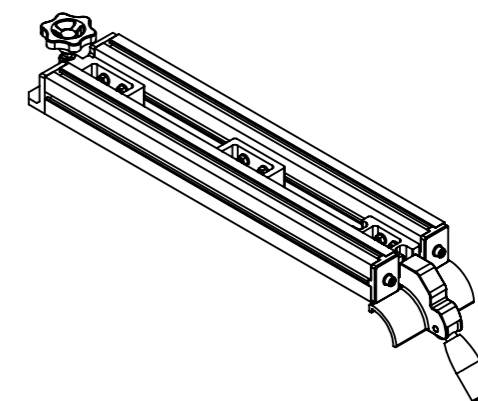
Keep the hammer head screws (Position 3) loose, you will later need to slide their heads into the slot on the aluminium profile.

8	1	/	Hexagonal nut, DIN 9334, M6	Part
7	1	/	Washer, DIN 9021, 6.4	Part
6	1	/	Hammer head screw, U8/M6x60	Part
5	1	VMK-01.0123.03.04	Handle $\varnothing 75 \times 33$	Part
4	1	VKM-01.0123.03.03	Connecting part 138x135x60	Part
3	4	/	Hammer head screw, U10/M8x25	Part
2	4	/	Hexagonal nut, DIN 934, M8	Part
1	4	/	Washer, DIN 125, 8.4	Part


Poz.	Kol.	Šifra	Naziv	ME
				
		Projekt:	Makita MLT100N Guide	
		Merilo:	1 : 10	
		Izdelač:	Remšak F.	
		Datum:	8.1.2023	
		Stran:	4 / 5	



Slide the sub-assemblies 1, 2 and 3 into the slots on the aluminium profiles. Lock the hammer head screws in and tighten the nuts (Position 6). In the end, attach end caps and fasten them with cylindrical head screws (Position 10). Use washers.



18	1	/	Screw, countersunk head, M4x8	Part
17	1	/	Hexagonal nut, DIN 9334, M6	Part
16	1	/	Washer, DIN 9021, 6.4	Part
15	1	/	Hammer head screw, U8/M6x60	Part
14	2	VKM-01.0123.03.05	Cap 60x45x15	Part
13	1	VMK-01.0123.03.04	Handle ø75x33	Part
12	2	/	Screw, cylindrical head, DIN 912, M6x25	Part
11	2	/	Washer, DIN 125, 6.4	Part
10	4	/	Screw, cylindrical head, DIN 912, M8x25	Part
9	1	VKM-01.0123.03.03	Connecting part 138x135x60	Part
8	1	VMK-01.0123.03.02	Connecting part 95x48x32	Part
7	12	/	Hammer head screw, U10/M8x25	Part
6	12	/	Hexagonal nut, DIN 934, M8	Part
5	16	/	Washer, DIN 125, 8.4	Part
4	2	/	ALU Profil 45x60, 610 mm	Part
3	1	VMK-01.0123.03.01	Connecting part 95x48x32	Part
2	1	/	ABS Slider (Original Makita Part)	Part
1	1	/	Handle (Original Makita Part)	Part

Poz.	Kol.	Šifra	Naziv	ME
				
		Projekt:	Makita MLT100N Guide	
		Merilo:	1 : 5	
		Izdelač:	Remšak F.	
		Datum:	8.1.2023	
		Stran:	5 / 5	